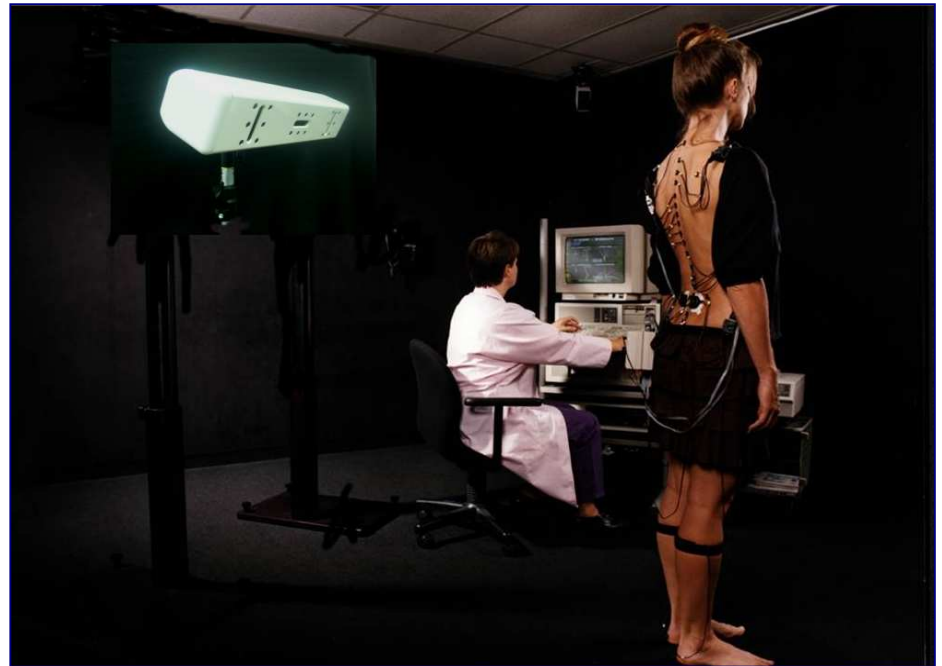




SPINOSCOPE® IV

The Expert Vision of Spinal Function



- Provides additional information to MRI and X-Ray data
- Complementary to MRI and X-Rays. Spinoscopy is to back FUNCTION as MRI and X-Rays are to back ANATOMY
- Spinoscopy provides a functional spine analysis that identifies the injured tissue as perceived by the central nervous system
- Expert System Analysis identifies Range of Normality (RON) as opposed to existing Range of Motion (ROM) methods
- The Spinoscope enables a clinic to assess the degree of spinal function and its limitations
- No other method is more *OBJECTIVE* in evaluating spinal function. Other methods rely on subjective input from the test subject
- A 100% objective method of evaluation of spinal function that does not depend on subjective input from test subject



2400 Central Ave, Suite J, Boulder, CO 80301, USA
Tel: (303) 447-9009 Fax: (303) 447-3905
www.spinoscope.com

